

1 μm

Mag = 8.00 K X

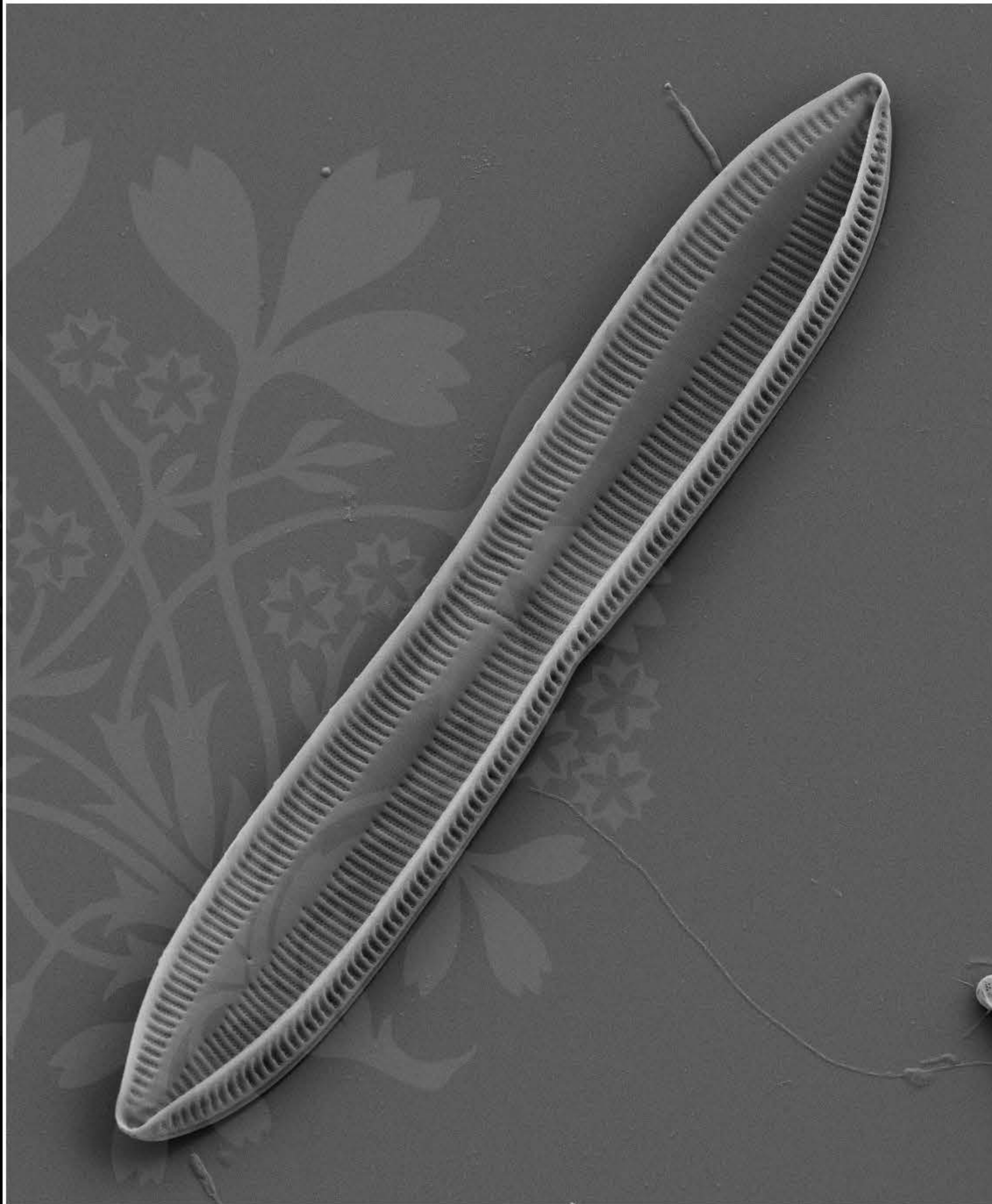
EHT = 5.00 kV

Signal A = SE2 Date :8 Nov 2017

WD = 4.4 mm

File Name = TRY981CAT_01.tif





2 μ m
└─┘

Mag = 2.80 K X

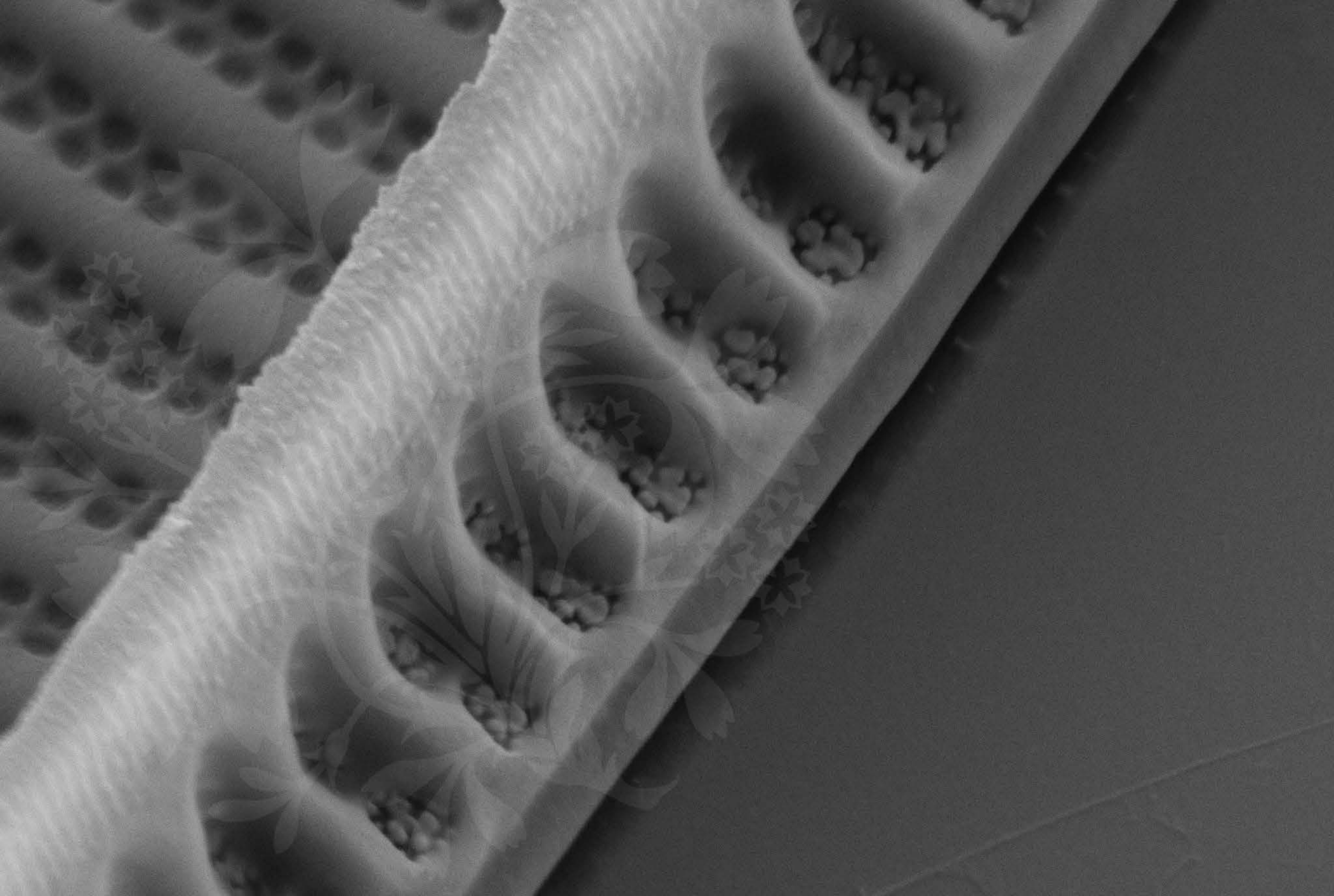
EHT = 5.00 kV

Signal A = SE2 Date :8 Nov 2017

WD = 4.4 mm

File Name = TRY981CAT_02.tif





200 nm
└───┘

Mag = 50.00 K X

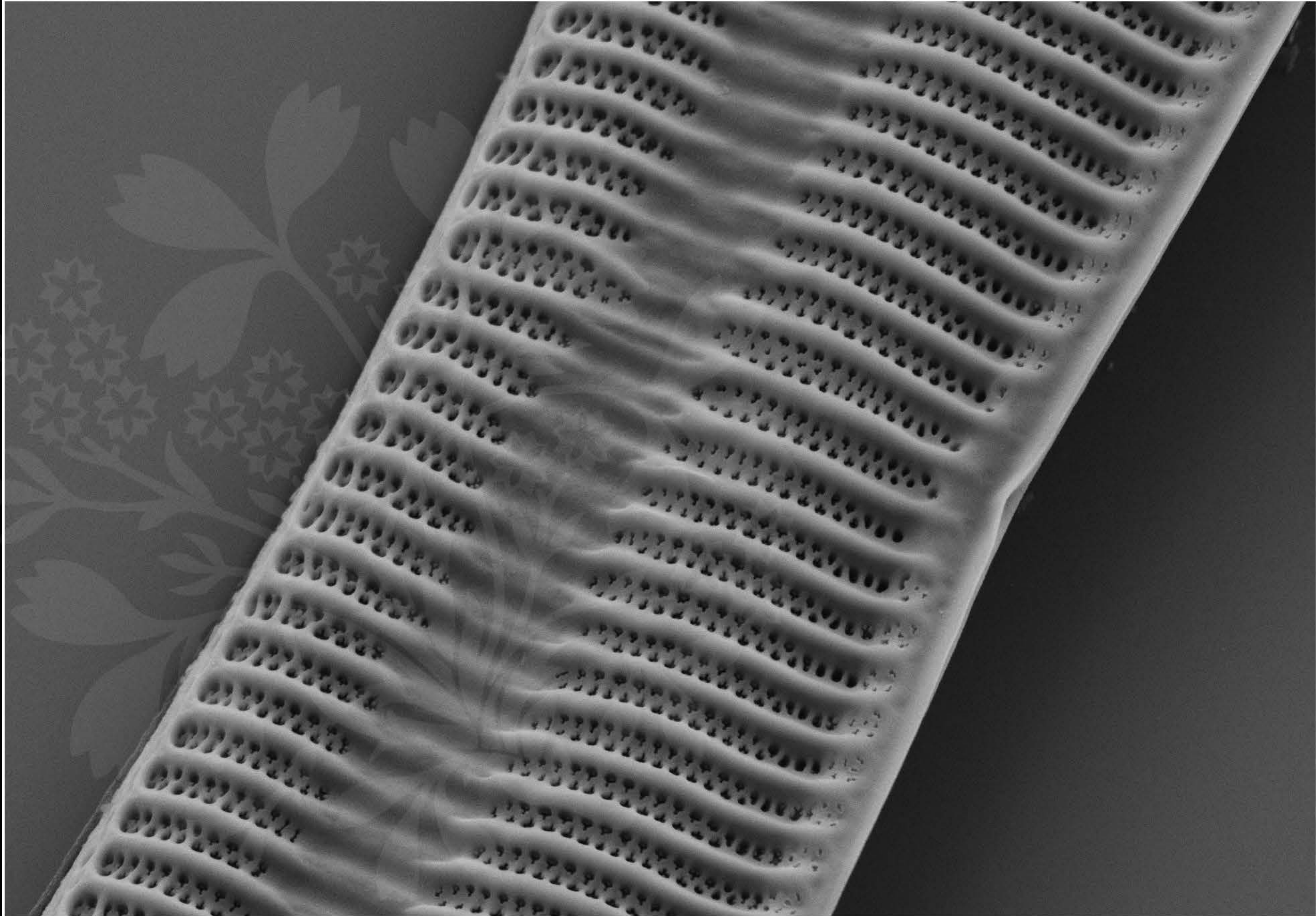
EHT = 5.00 kV

Signal A = SE2 Date :8 Nov 2017

WD = 4.4 mm

File Name = TRY981CAT_03.tif





1 μm

Mag = 16.00 K X

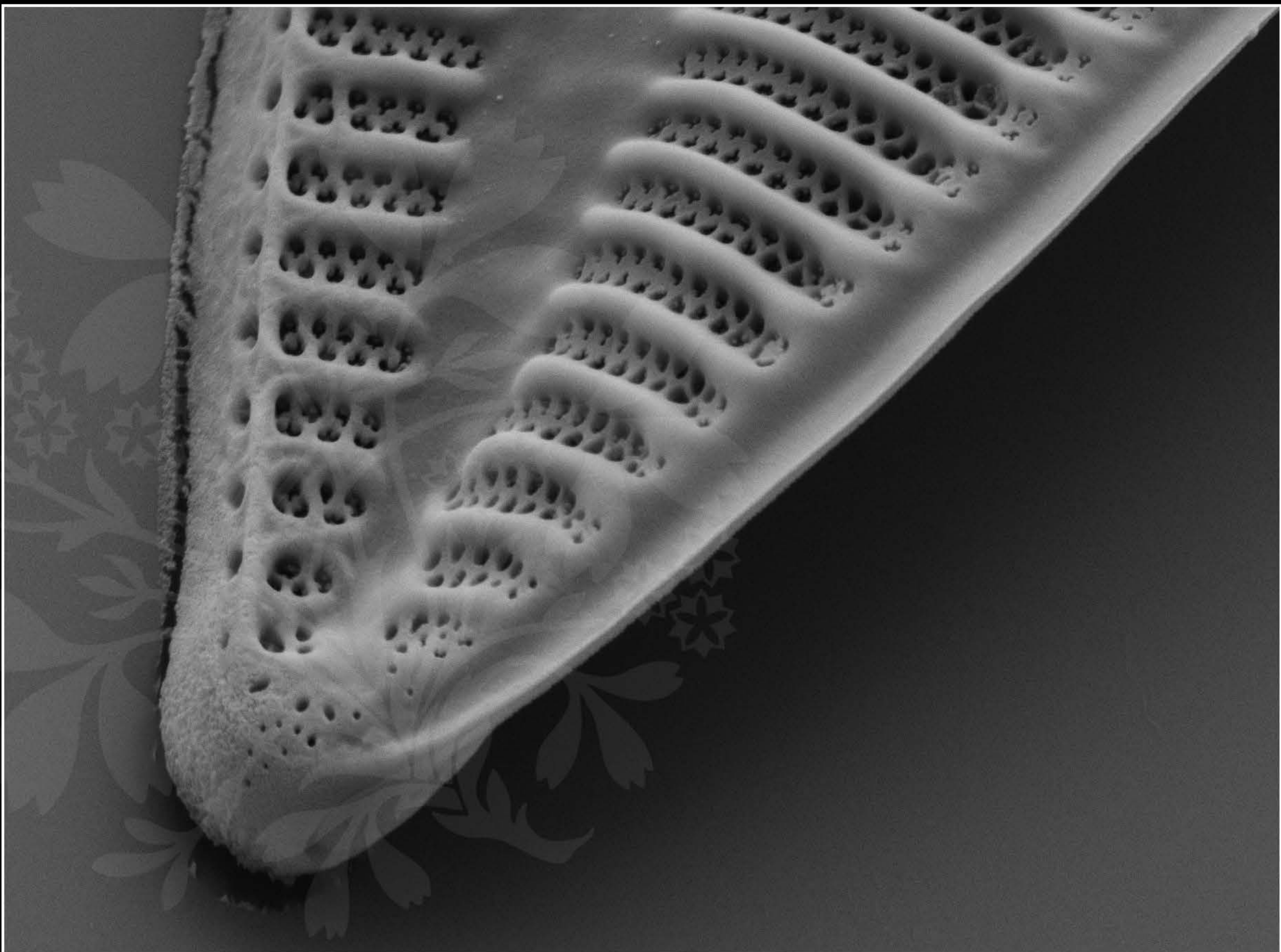
EHT = 5.00 kV

Signal A = SE2 Date :8 Nov 2017

WD = 4.4 mm

File Name = TRY981CAT_04.tif





300 nm
└───┘

Mag = 25.00 K X

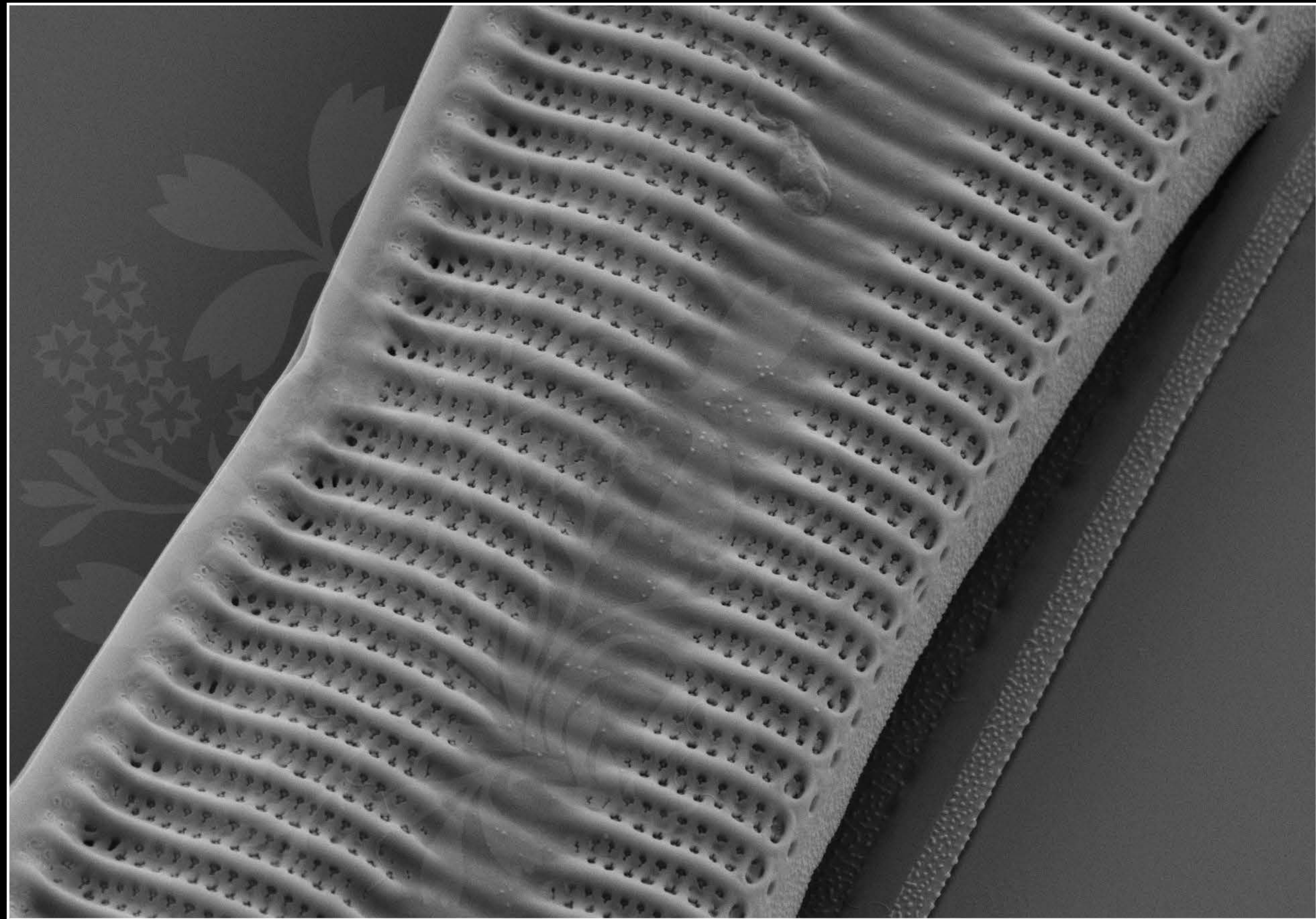
EHT = 5.00 kV

Signal A = SE2 Date :8 Nov 2017

WD = 4.4 mm

File Name = TRY981CAT_05.tif





1 μm

Mag = 16.00 K X

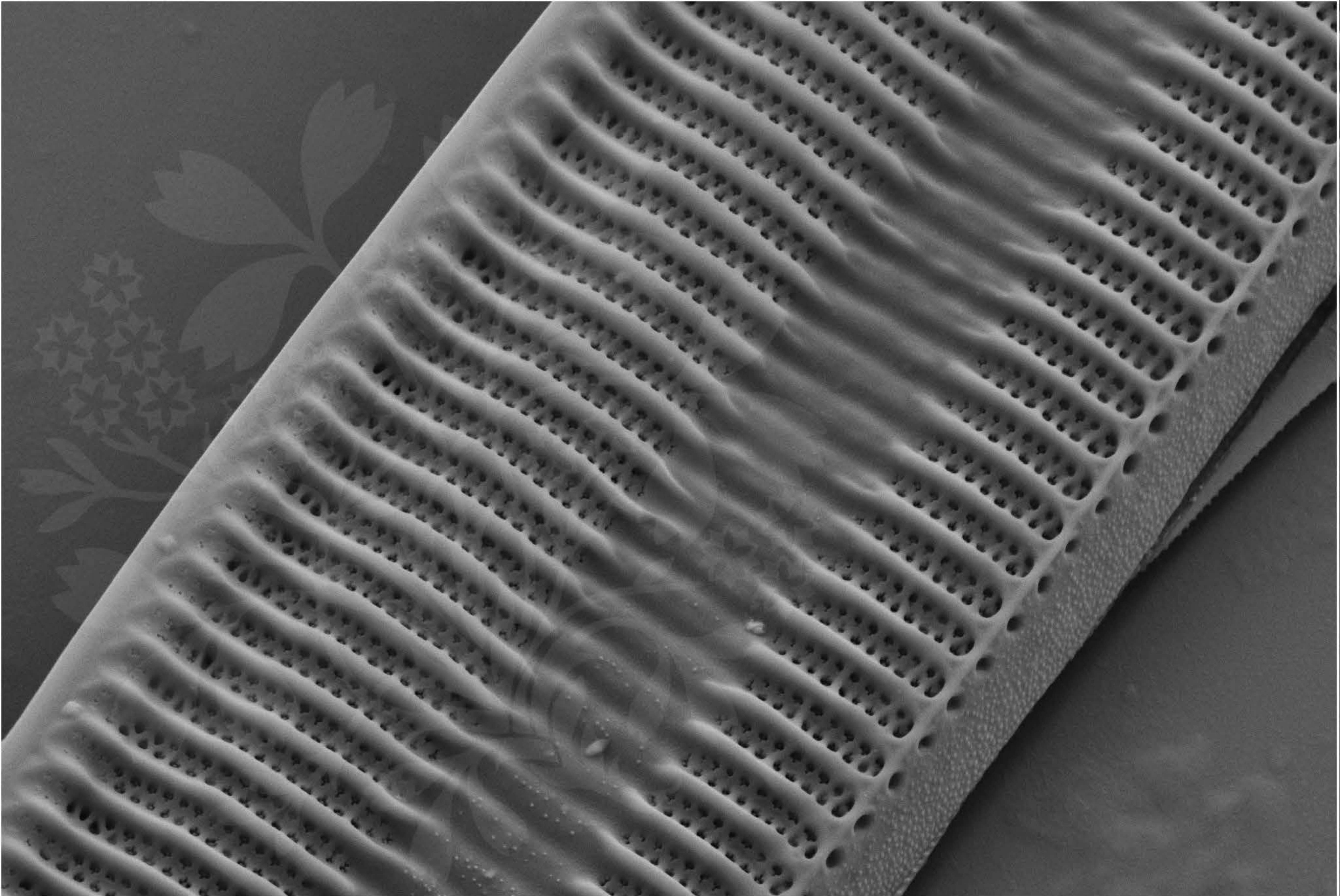
EHT = 5.00 kV

Signal A = SE2 Date :8 Nov 2017

WD = 4.4 mm

File Name = TRY981CAT_06.tif





1 μm

Mag = 16.00 K X

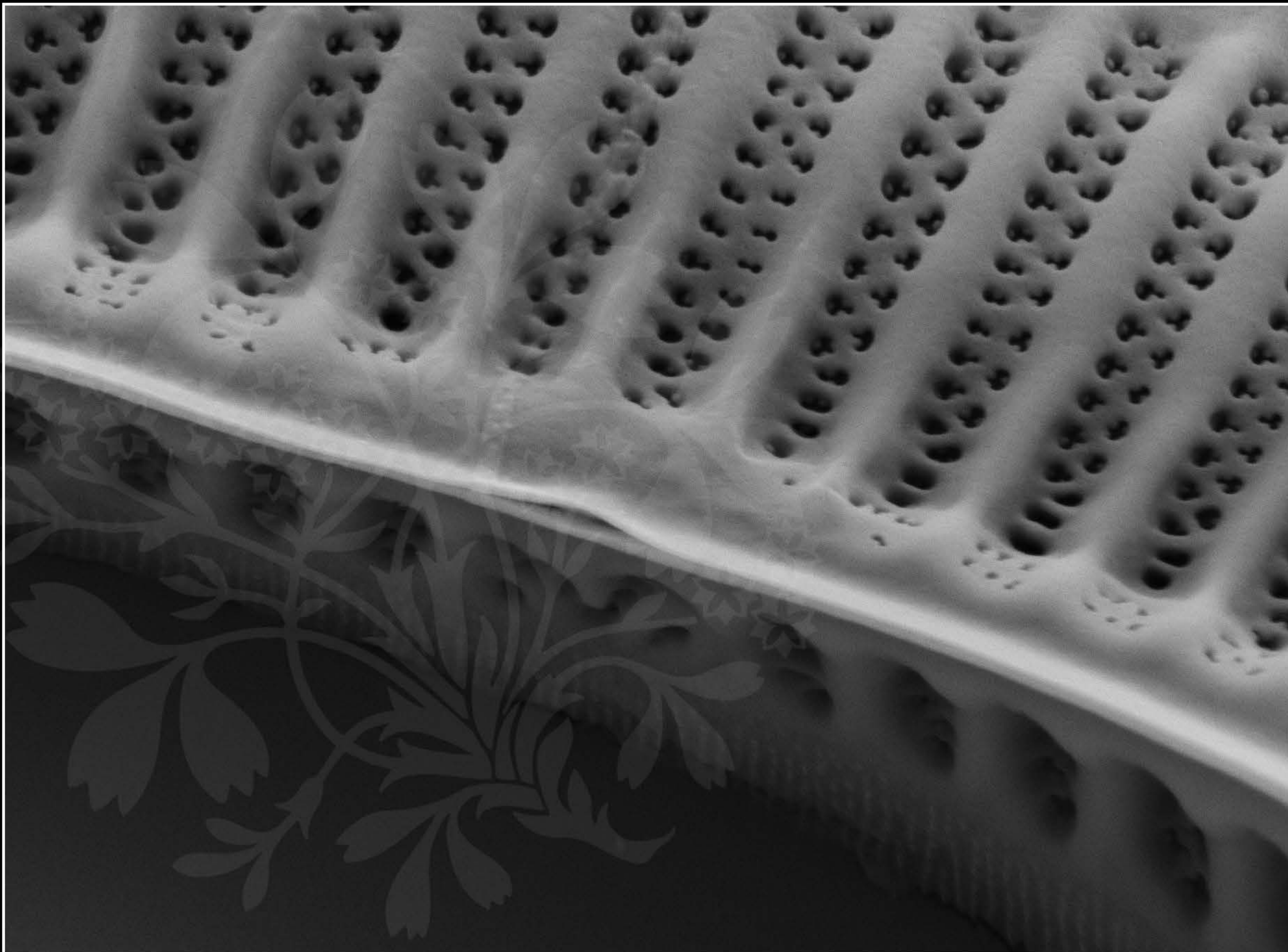
EHT = 5.00 kV

Signal A = SE2 Date :8 Nov 2017

WD = 4.5 mm

File Name = TRY981CAT_07.tif





200 nm
└───┘

Mag = 40.00 K X

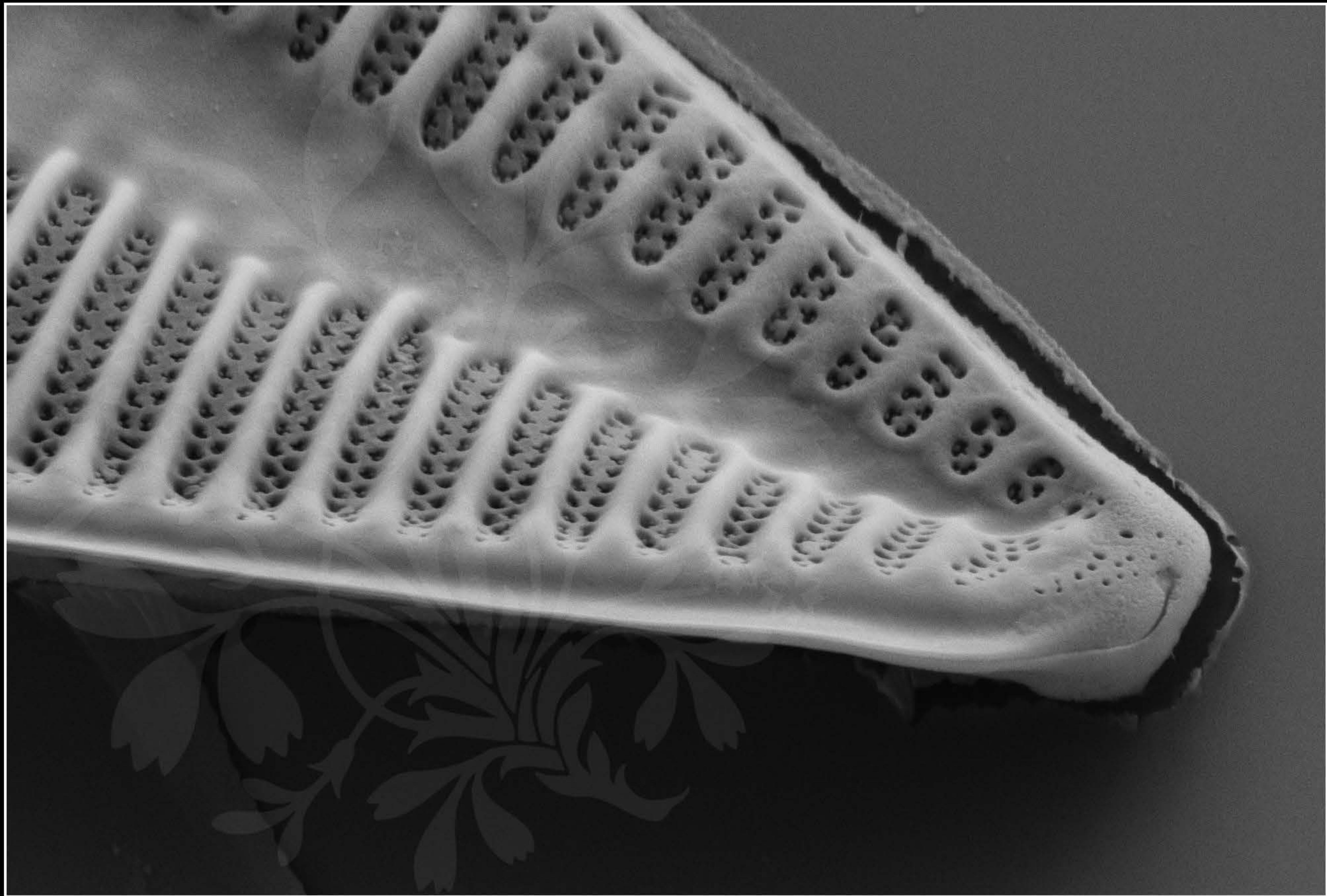
EHT = 5.00 kV

Signal A = SE2 Date : 8 Nov 2017

WD = 4.4 mm

File Name = TRY981CAT_08.tif





300 nm
└───┘

Mag = 25.00 K X

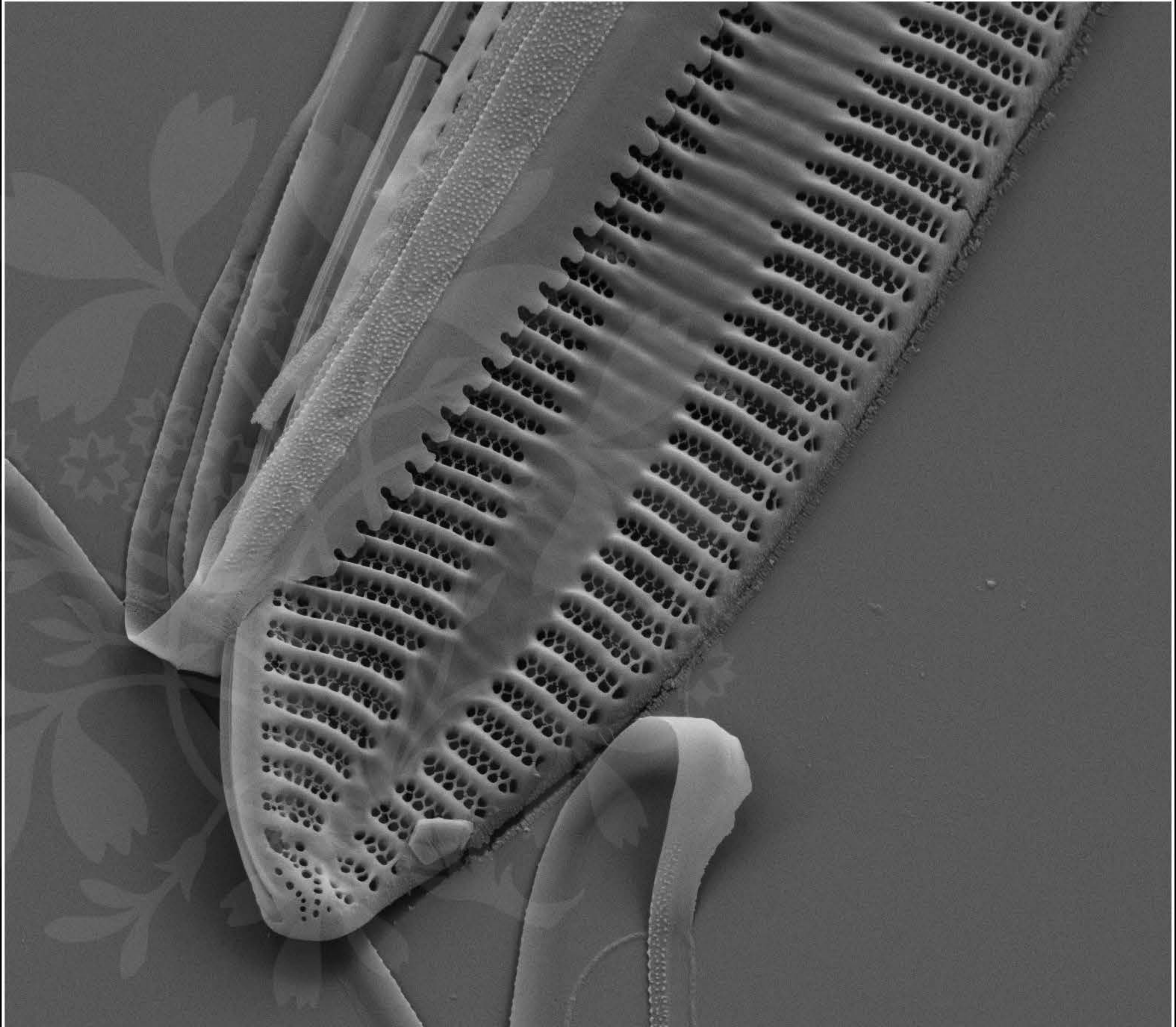
EHT = 5.00 kV

Signal A = SE2 Date :8 Nov 2017

WD = 4.4 mm

File Name = TRY981CAT_09.tif





1 μm

Mag = 10.00 K X

EHT = 5.00 kV

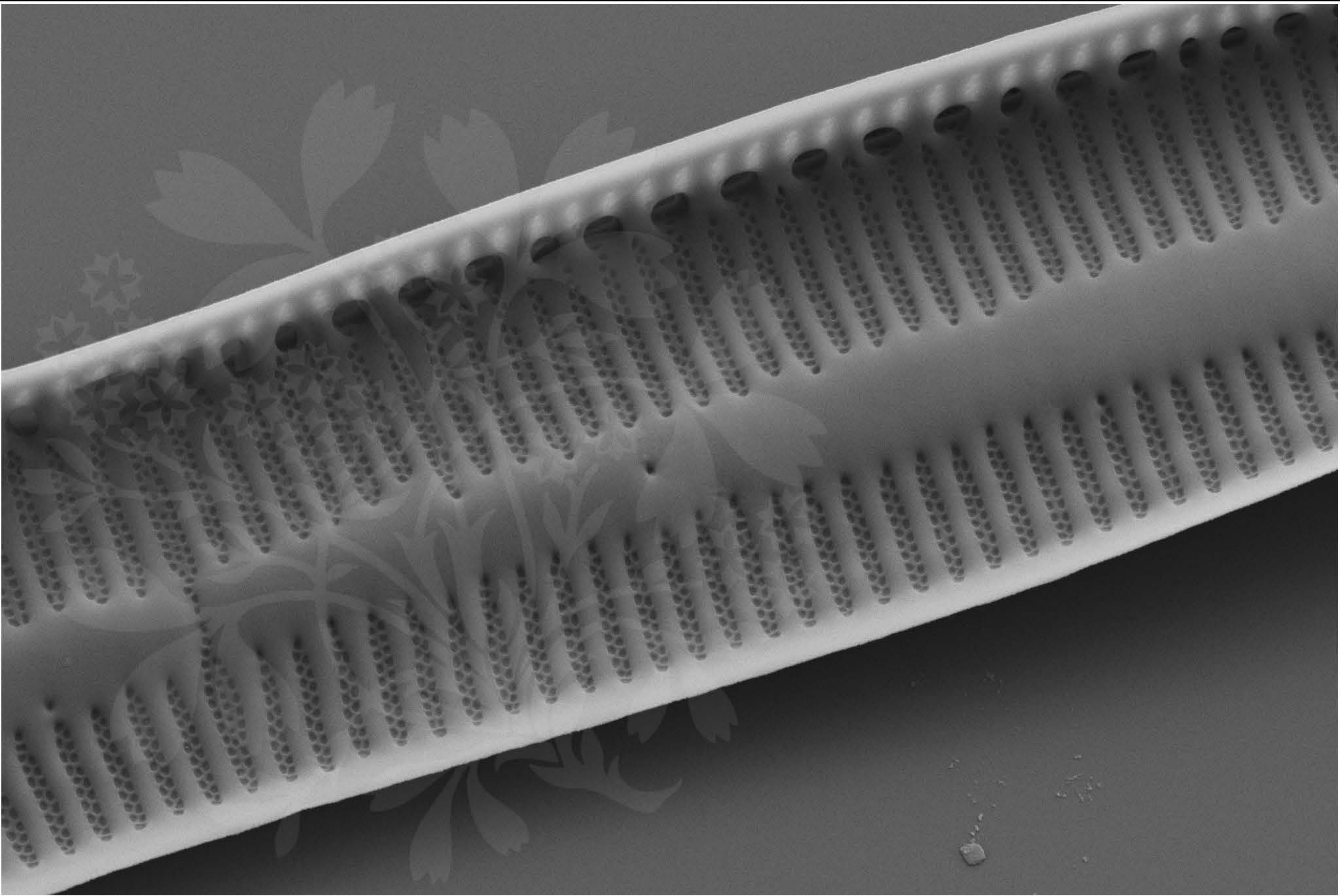
Signal A = SE2

Date :8 Nov 2017

WD = 4.4 mm

File Name = TRY981CAT_10.tif





1 μm

Mag = 12.00 K X

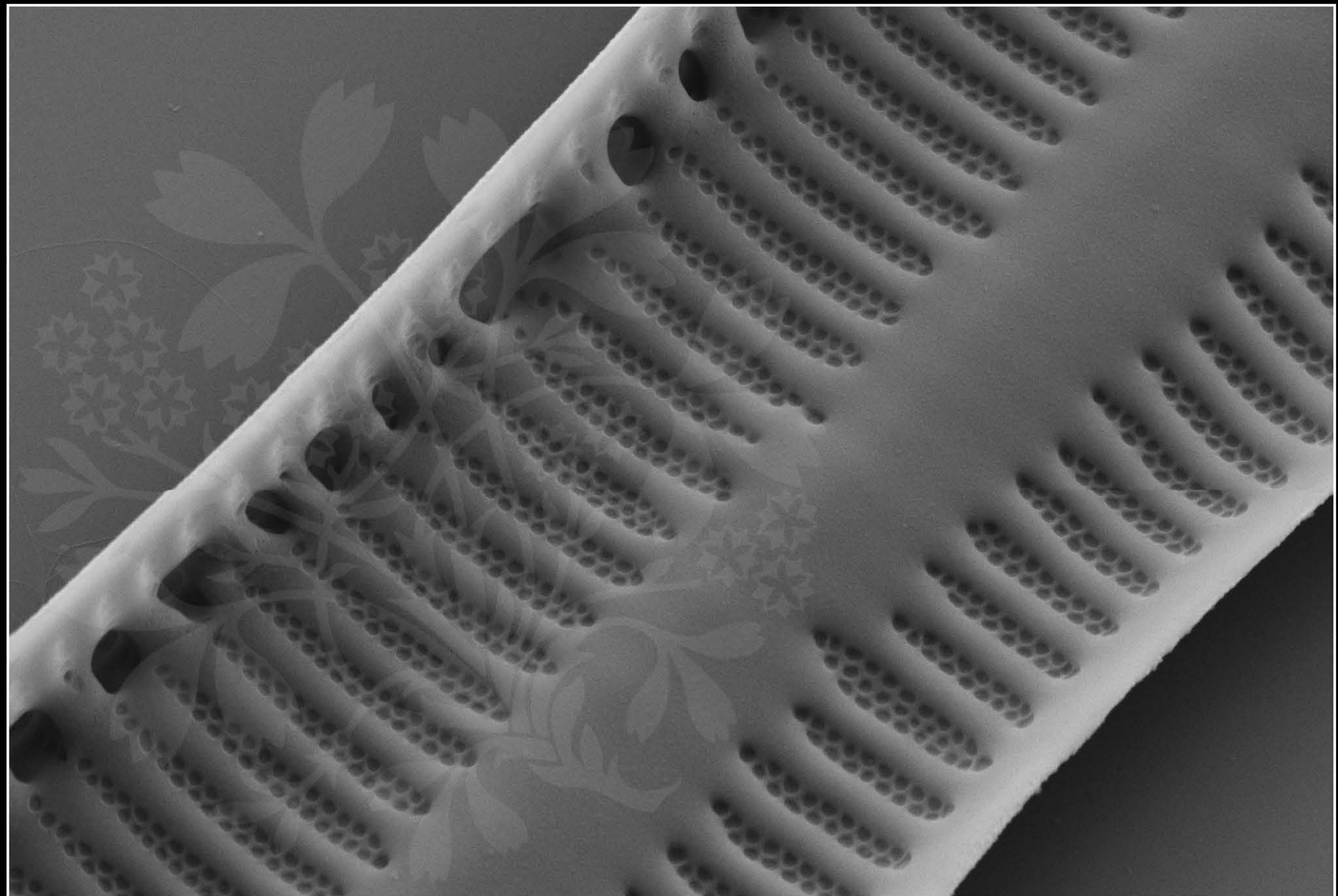
EHT = 5.00 kV

Signal A = SE2 Date :8 Nov 2017

WD = 4.4 mm

File Name = TRY981CAT_11.tif





1 μm

Mag = 20.00 K X

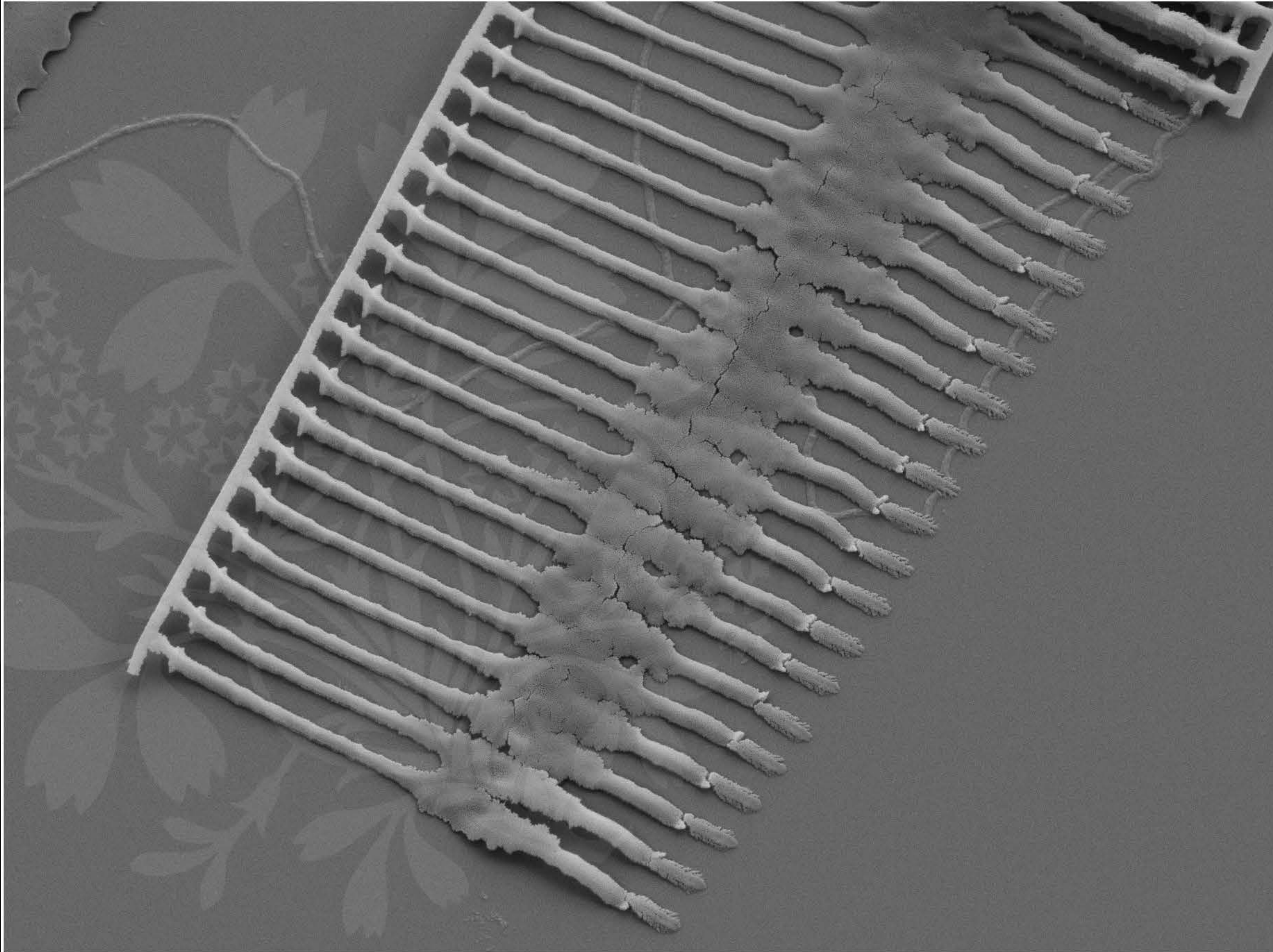
EHT = 5.00 kV

Signal A = SE2 Date :8 Nov 2017

WD = 4.4 mm

File Name = TRY981CAT_12.tif





1 μm

Mag = 14.00 K X

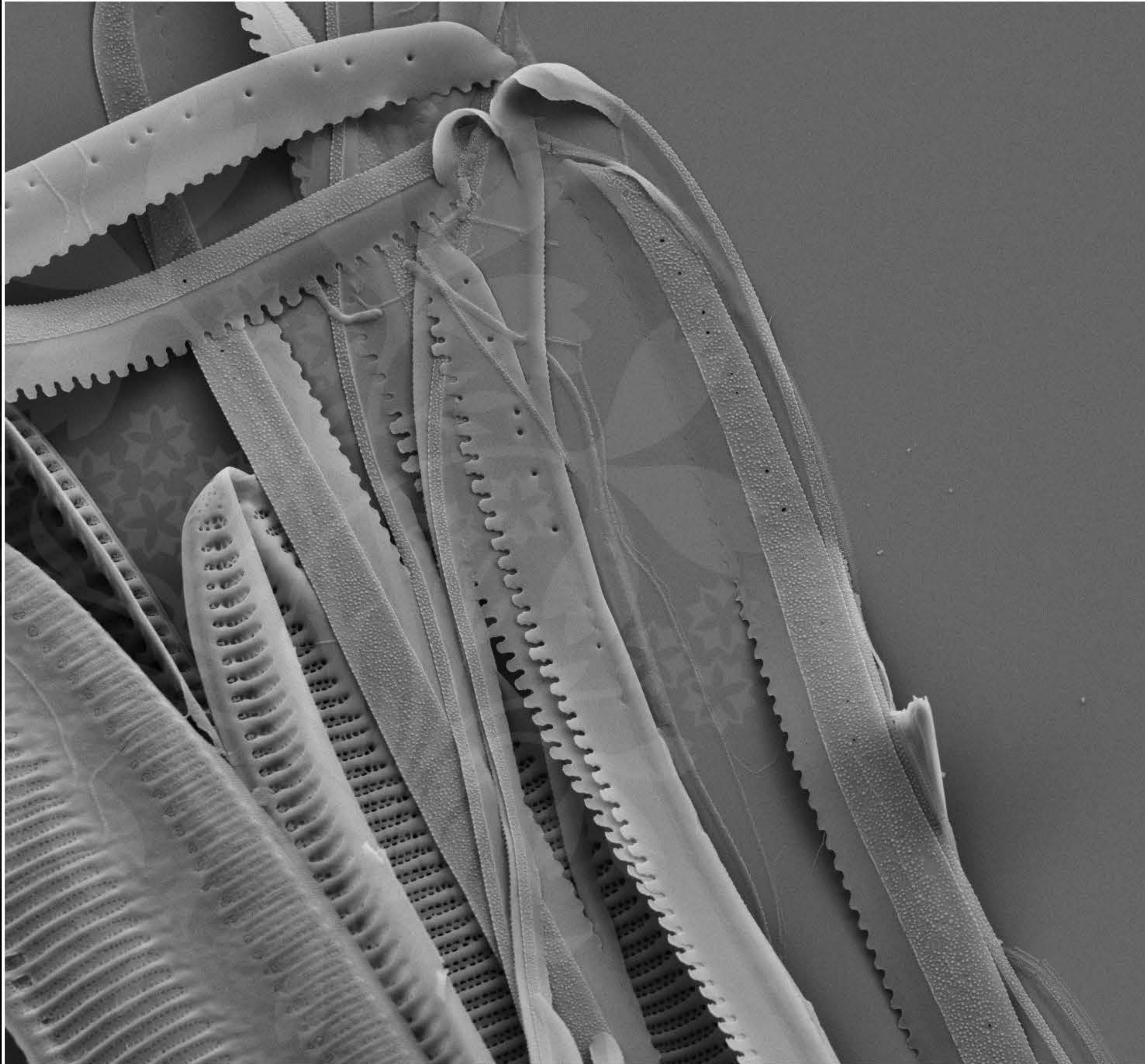
EHT = 5.00 kV

Signal A = SE2 Date :8 Nov 2017

WD = 4.4 mm

File Name = TRY981CAT_13.tif





1 μm
└──┘

Mag = 6.00 K X

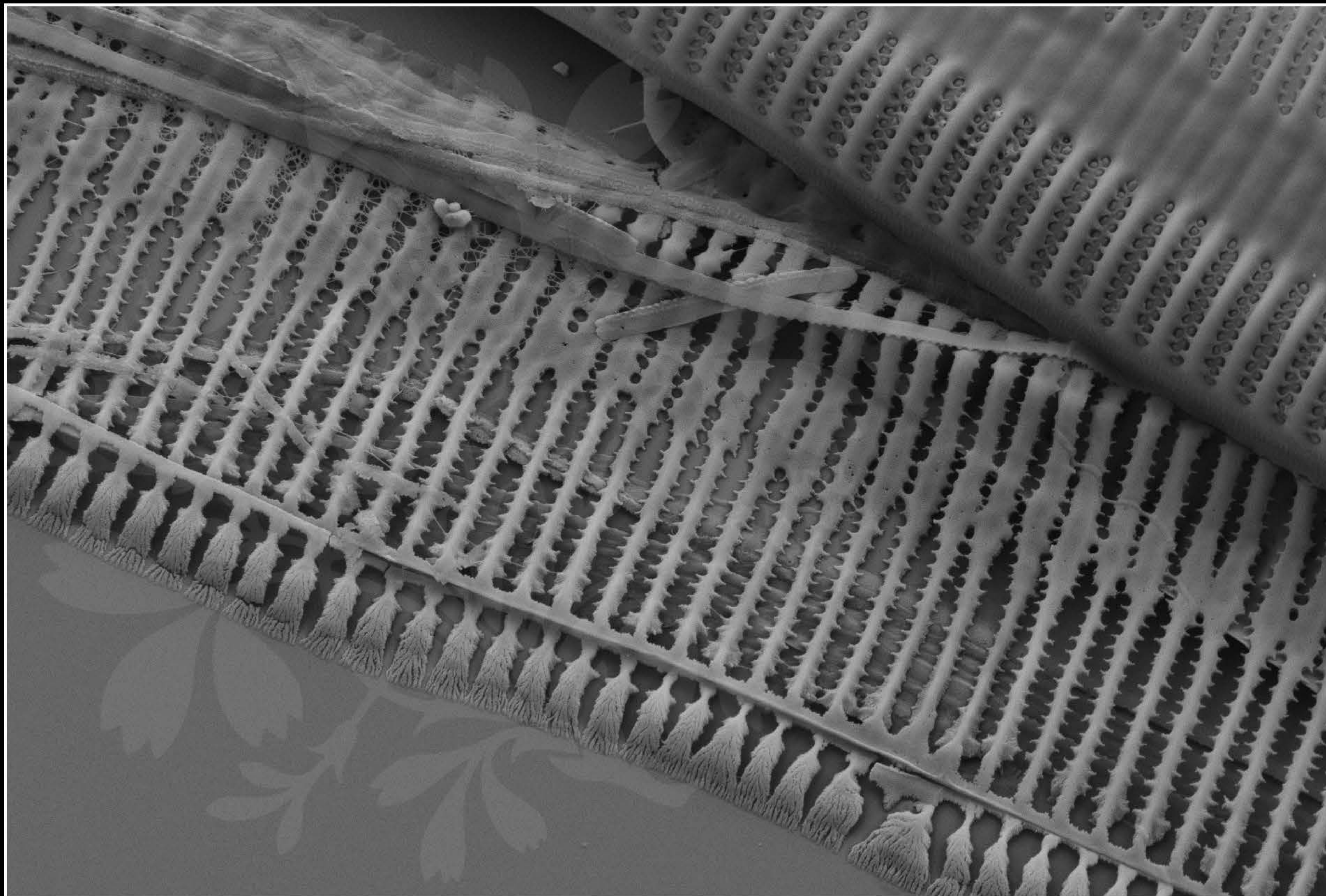
EHT = 5.00 kV

Signal A = SE2 Date :8 Nov 2017

WD = 4.4 mm

File Name = TRY981CAT_14.tif





1 μm

Mag = 12.00 K X

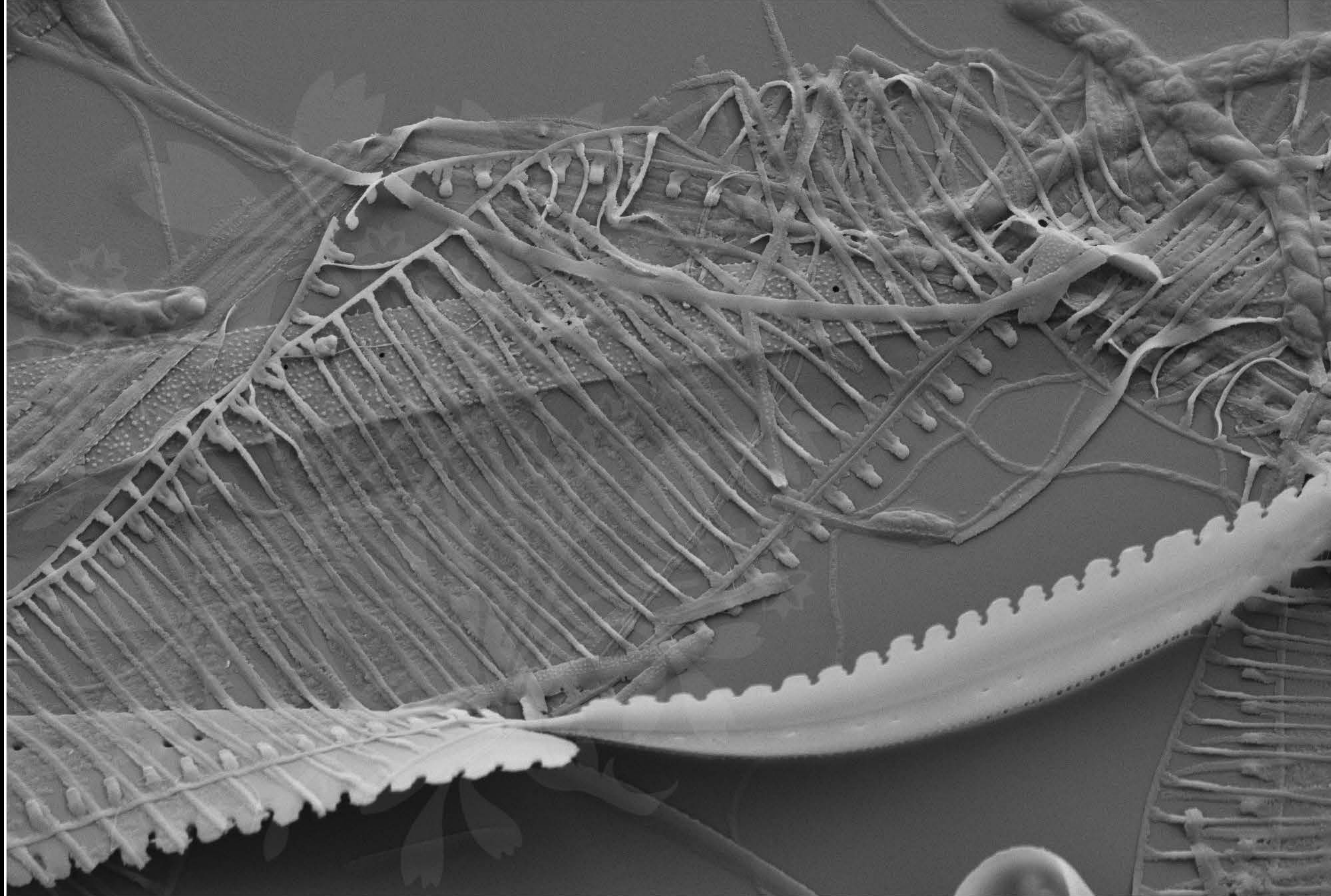
EHT = 5.00 kV

Signal A = SE2 Date :8 Nov 2017

WD = 4.4 mm

File Name = TRY981CAT_15.tif





1 μ m

Mag = 12.00 K X

EHT = 5.00 kV

Signal A = SE2

Date :8 Nov 2017

WD = 4.4 mm

File Name = TRY981CAT_16.tif

